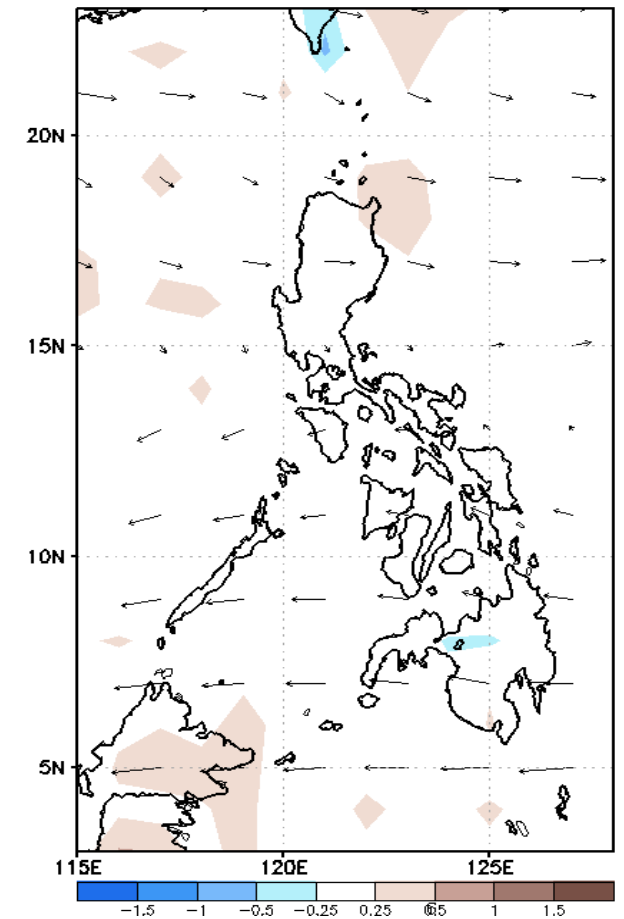
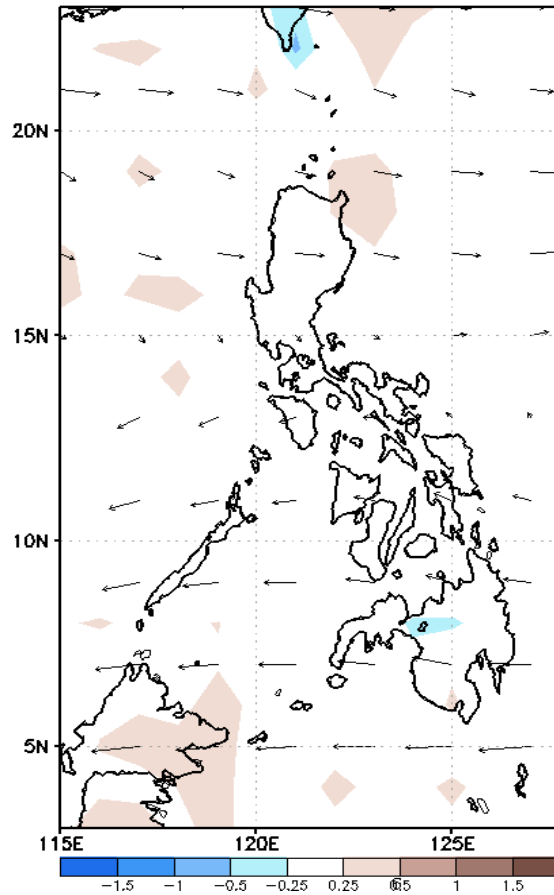
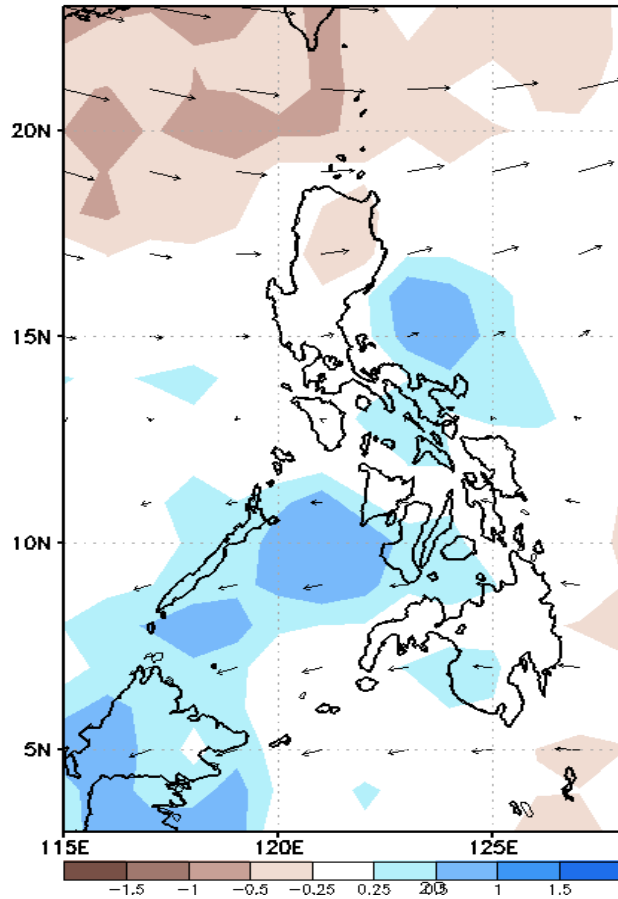


GEFS Week-1 Forecasts: Divergence & Wind Anomaly

Week 1: Oct 14-20, 2019

GEFS Week-1 200-hPa Divergence and Wind Anomaly Valid: 20191014 - 20191020
GEFS Week-1 700-hPa Divergence and Wind Anomaly Valid: 20191014 - 20191020
GEFS Week-1 850-hPa Divergence and Wind Anomaly Valid: 20191014 - 20191020

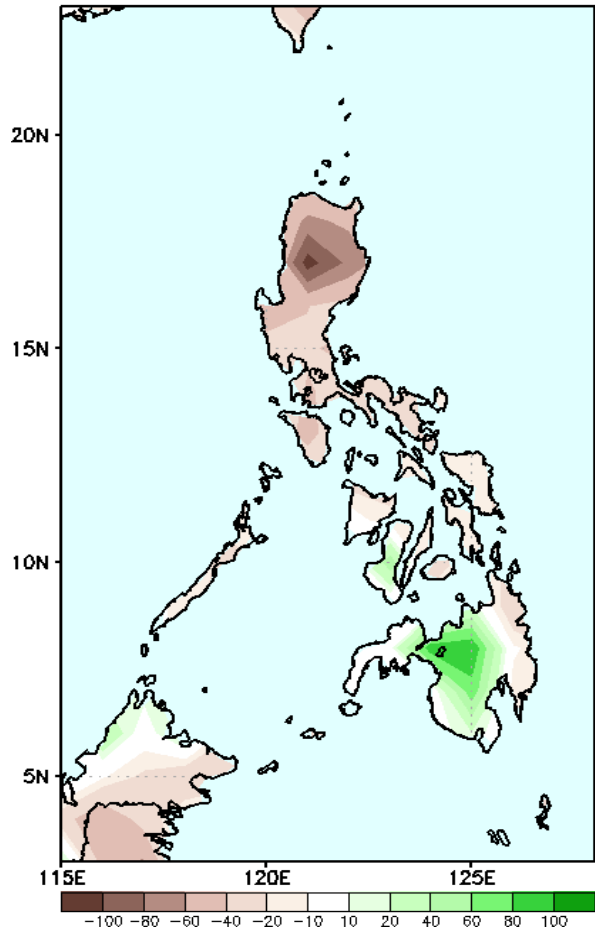


Low (850 hPa) and high (200 hPa) divergence (Brown shaded color) indicates less likelihood of precipitation in most part of the country. Westerly winds is forecasted to affect most parts of the country, while westerly – northeasterly wind flow to affect north and central Luzon during the forecast period.

Precipitation Anomaly and Exceedance Probability > 25/50 mm

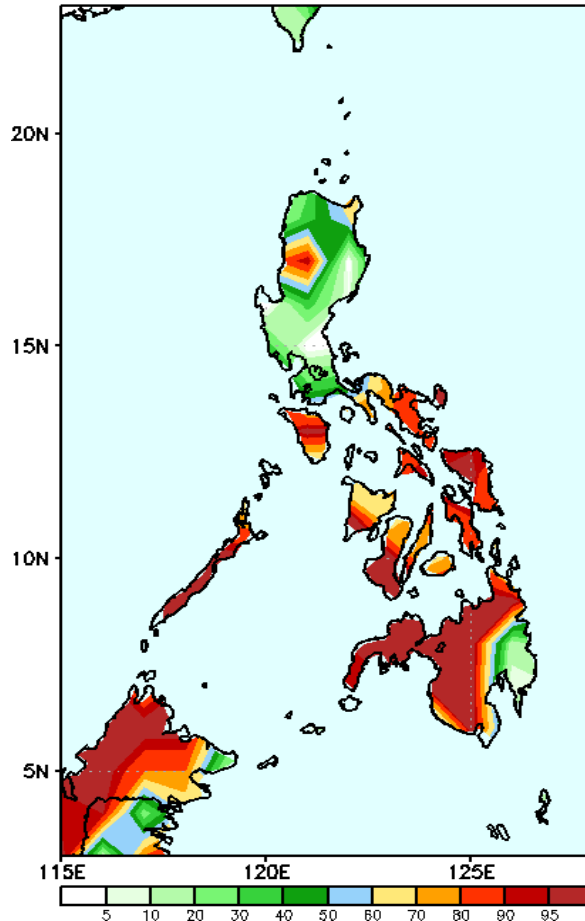
Week 1: Oct 14-20, 2019

GEFS Week-1 Precip Anomaly
Valid: 20191014 - 20191020



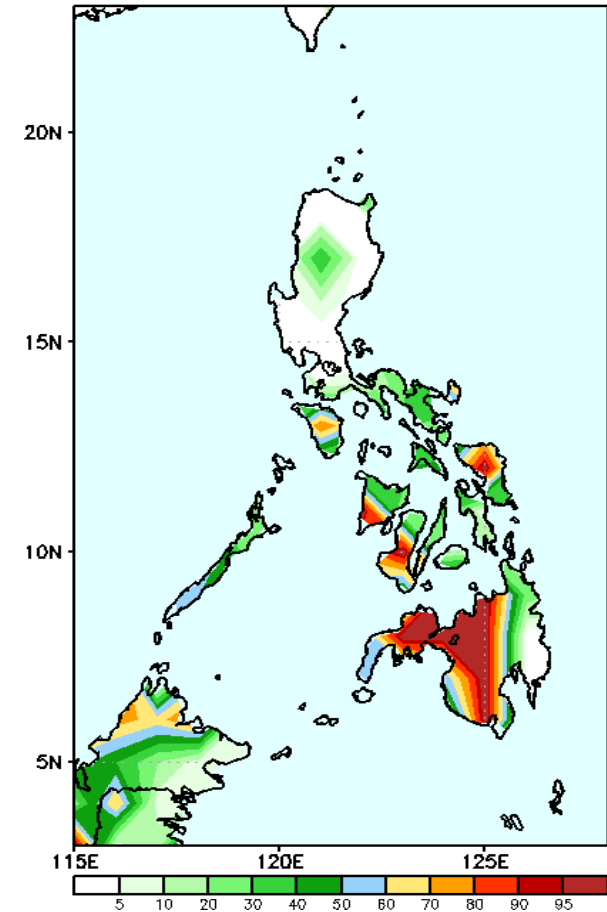
Rainfall deficit of 40-60 mm is most likely in Luzon and most parts of Visayas and eastern Mindanao, while the rest of Mindanao and Negros may experience increase in rainfall during the forecast period.

GEFS Week-1 Exceedance Prob. > 25mm
Valid: 20191014 - 20191020



High probabilities for rainfall exceeding 25mm in Bicol region, Visayas and most parts of Mindanao. While less likelihood for the rest of Luzon and south-eastern Mindanao.

GEFS Week-1 Exceedance Prob. > 50mm
Valid: 20191014 - 20191020

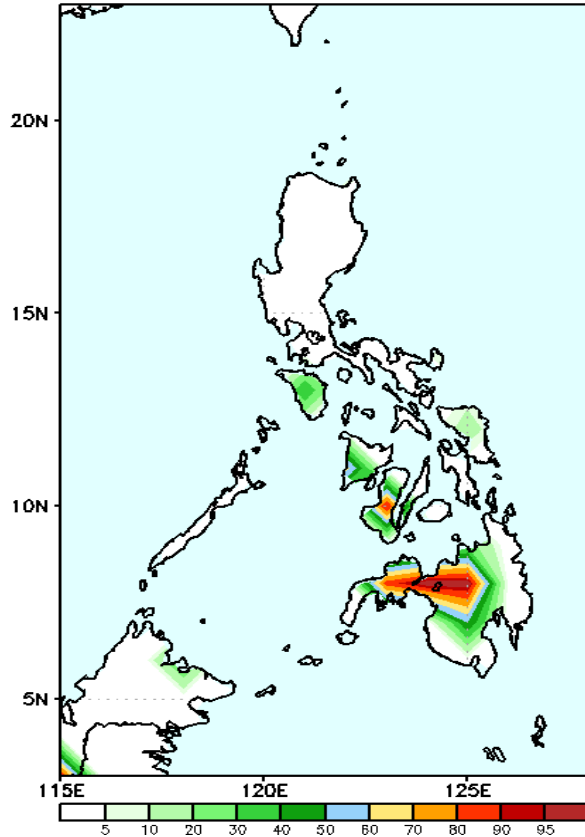


High probabilities for rainfall exceeding 50 mm in Western Visayas and western and Central Mindanao while less probable in Luzon and the rest of Visayas.

Exceedance Probability > 100/150/200 mm

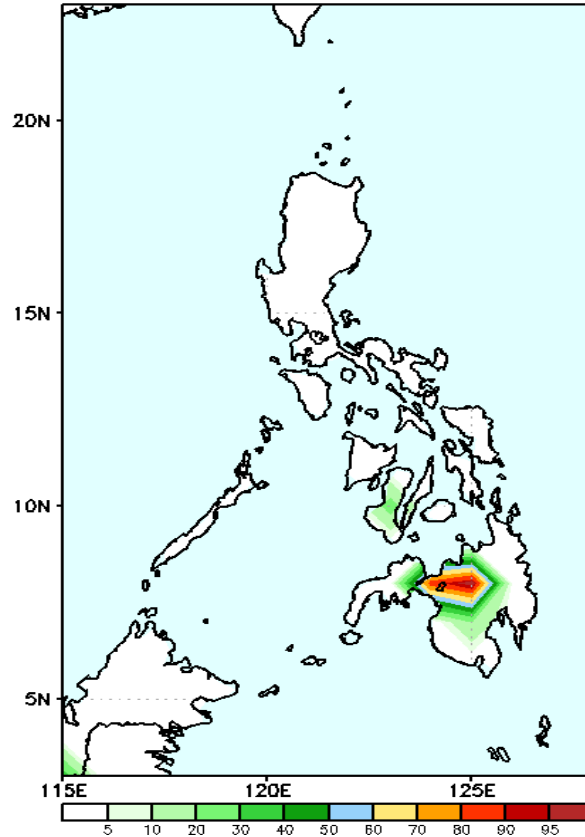
Week 1: Oct 14-20, 2019

GEFS Week-1 Exceedance Prob. > 100mm
Valid: 20191014 - 20191020



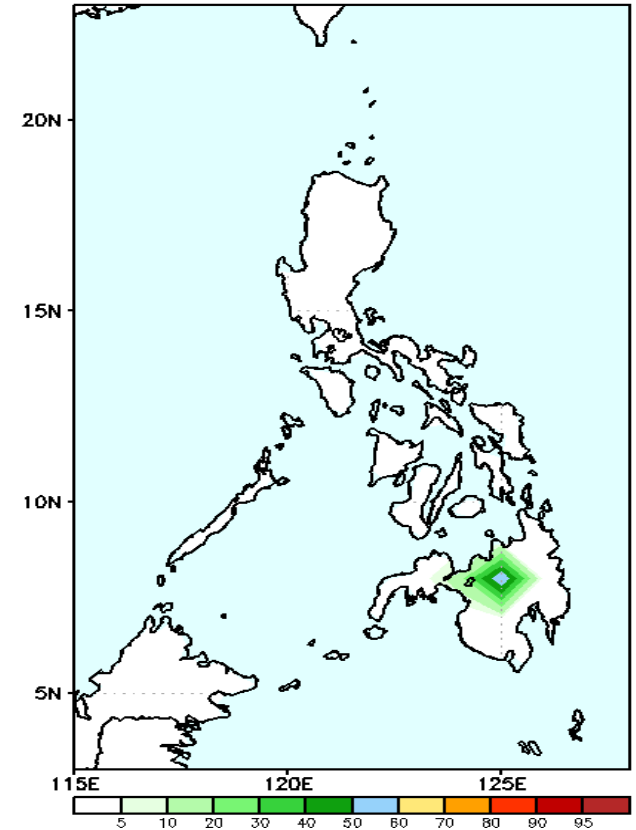
Less probability of rainfall to exceed 100 mm in most parts of the country except in the northwestern part of Mindanao (80-90% probability)

GEFS Week-1 Exceedance Prob. > 150mm
Valid: 20191014 - 20191020



Less probability of rainfall to exceed 150 mm in most parts of the country except in the northwestern part of Mindanao (40-80% probability)

GEFS Week-1 Exceedance Prob. > 200mm
Valid: 20191014 - 20191020

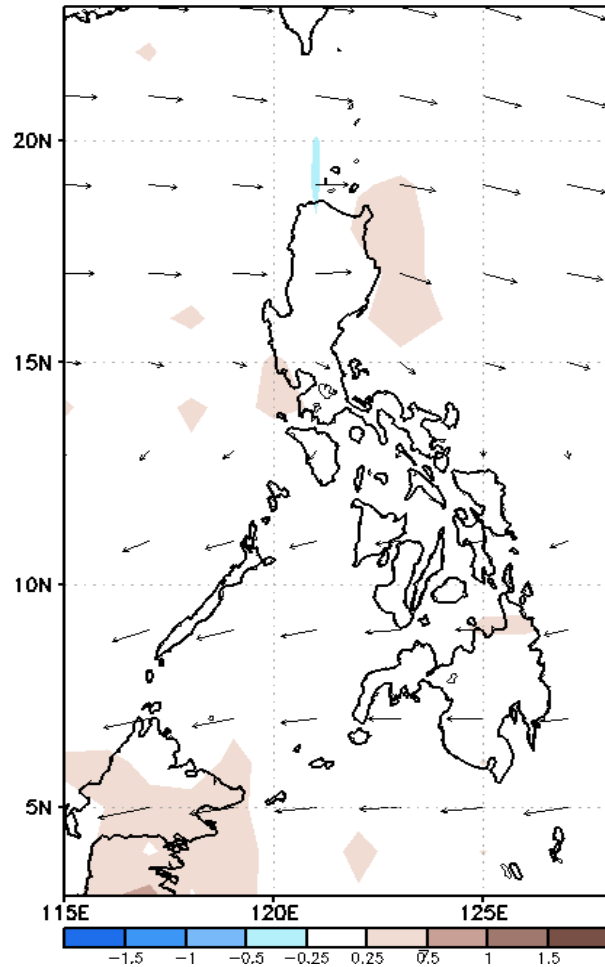


Less probability of rainfall to exceed 200 mm in all parts of the country during the forecast period.

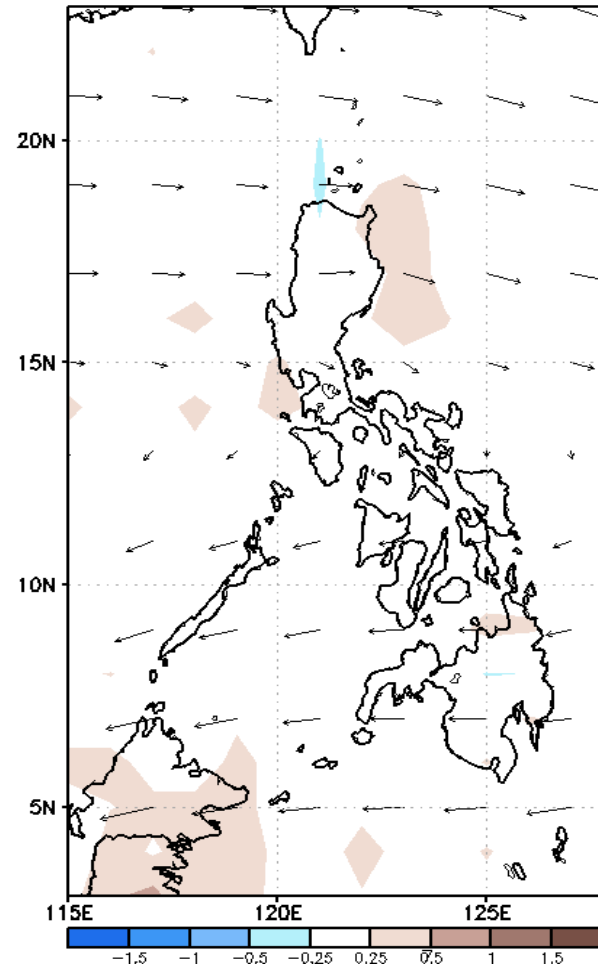
GEFS Week-2 Forecasts: Divergence & Wind Anomaly

Week 2: Oct 21-27, 2019

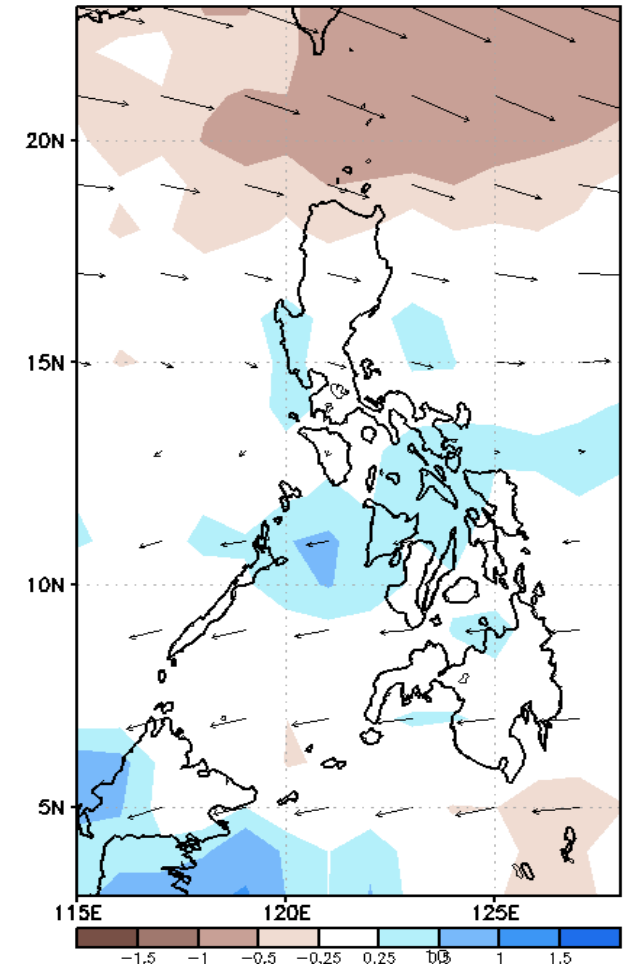
GEFS Week-2 850-hPa Divergence and Wind Anomaly
Valid: 20191021 - 20191027



GEFS Week-2 700-hPa Divergence and Wind Anomaly
Valid: 20191021 - 20191027



GEFS week-2 200-hPa Divergence and Wind Anomaly
Valid: 20191021 - 20191027

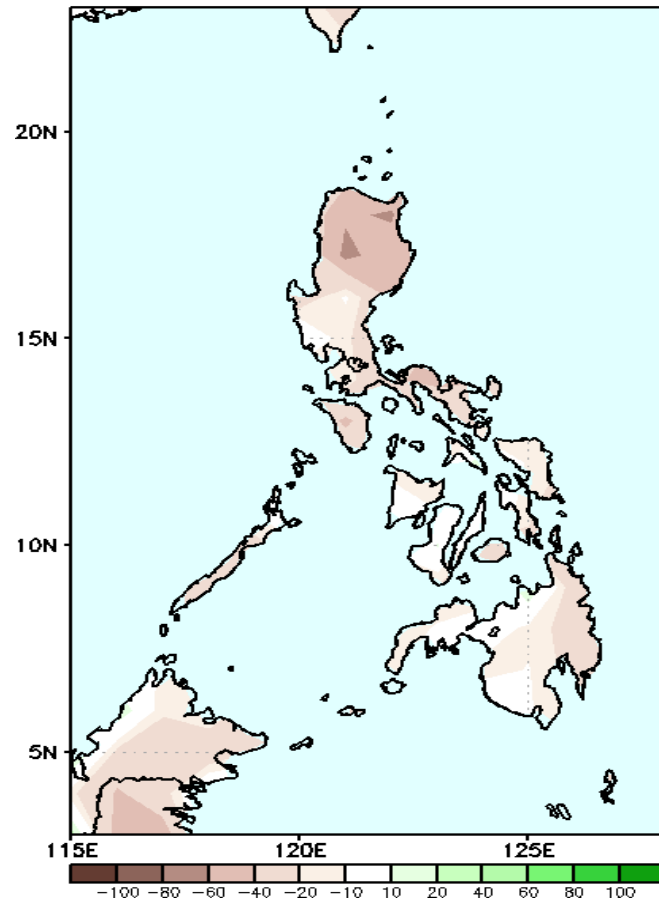


Low (850 hPa) and high (200 hPa) divergence indicates a likelihood of precipitation northeastern part of Luzon and Northern Mindanao. Westerly winds is forecasted to affect most parts of the country, while westerly – northeasterly wind flow to affect north and central Luzon during the forecast period.

Precipitation Anomaly and Exceedance Probability > 25/50 mm

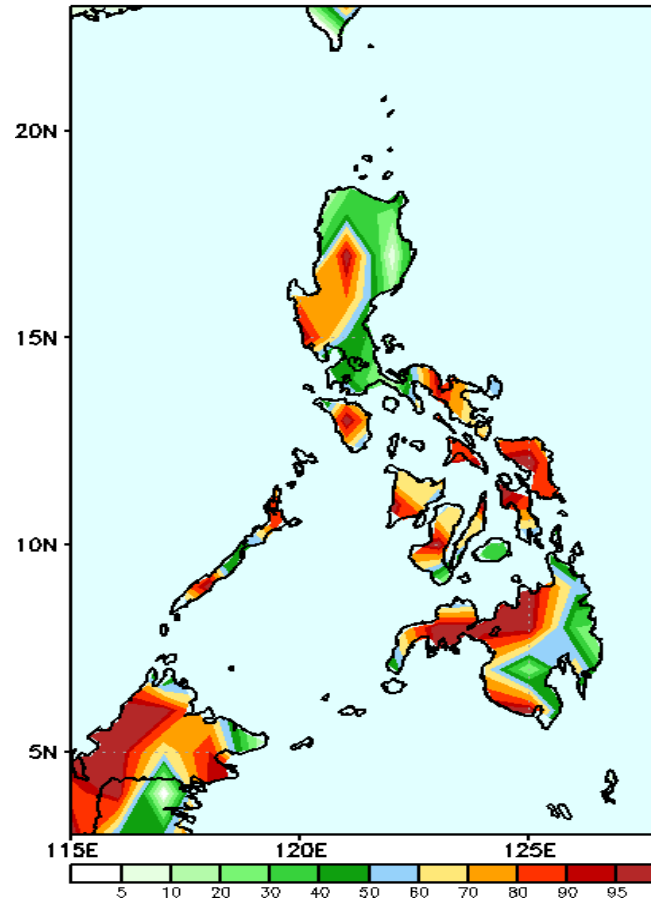
Week 2: Oct 21-27, 2019

GEFS Week-2 Precip Anomaly
Valid: 20191021 - 20191027



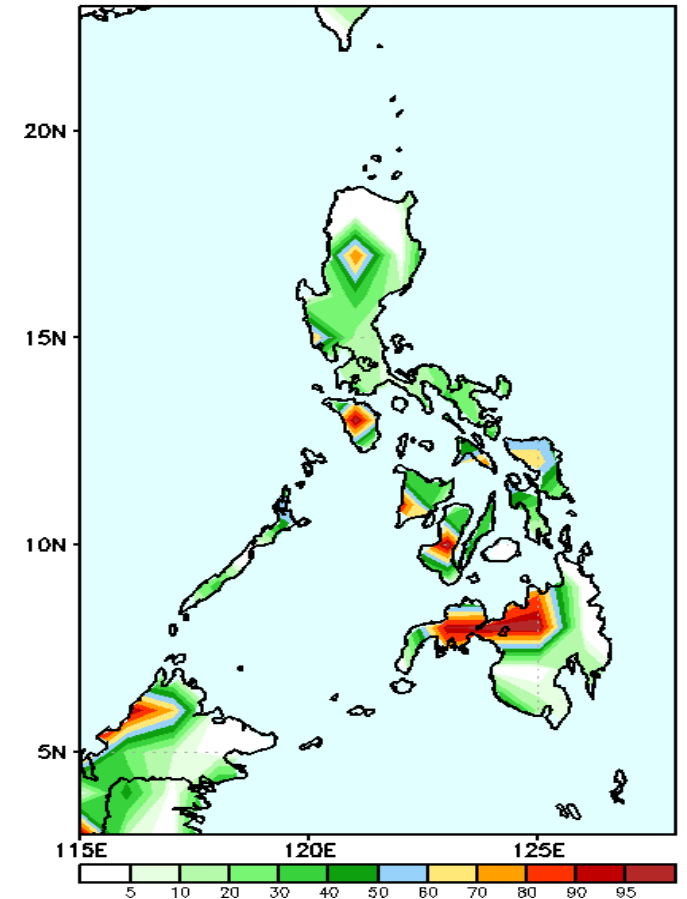
Rainfall deficit of 20-40 mm is most likely in most parts of the country during the forecast period.

GEFS Week-2 Exceedance Prob. > 25mm
Valid: 20191021 - 20191027



High probabilities for rainfall exceeding 25mm in most parts of western Luzon, Visayas and north and western Mindanao, while less likelihood in the remaining parts of the country.

GEFS Week-2 Exceedance Prob. > 50mm
Valid: 20191021 - 20191027

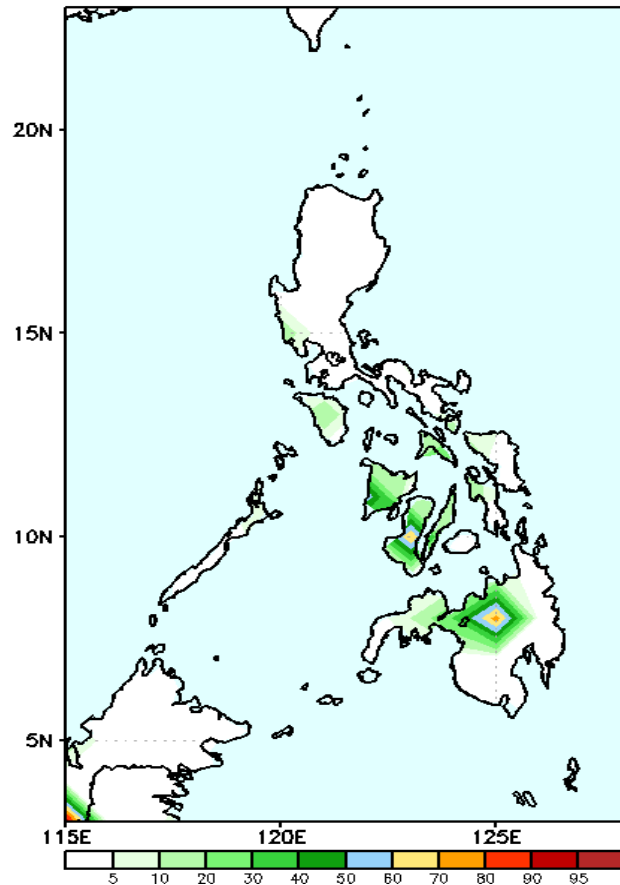


Less probability of rainfall to exceed 50mm in most parts of country except in parts of Mindoro, Antique, parts of Negros and north-western Mindanao

Exceedance Probability > 100/150/200 mm

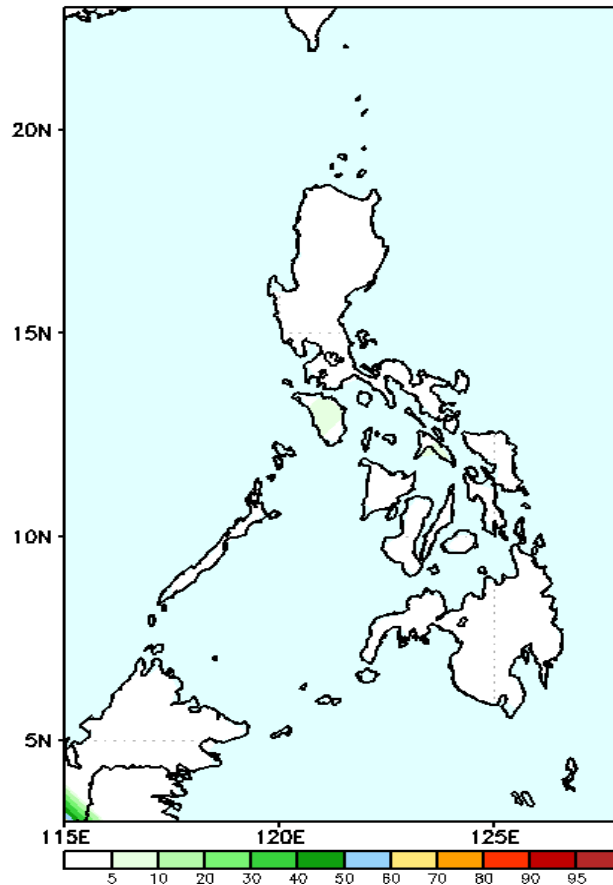
Week 2: Oct 21-27, 2019

GEFS Week-2 Exceedance Prob. > 100mm
Valid: 20191021 - 20191027



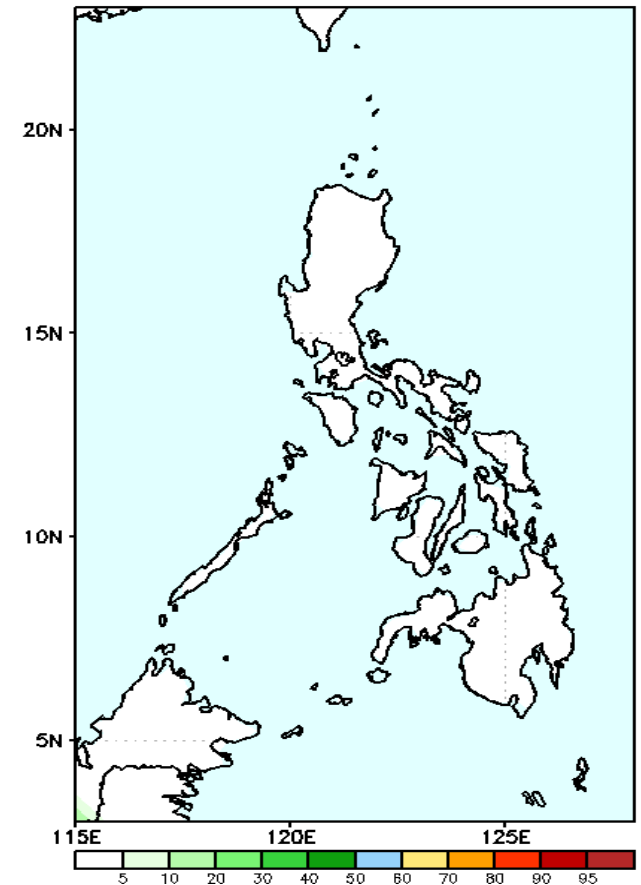
Less probability of rainfall to exceed 100 mm in most parts of the country.

GEFS Week-2 Exceedance Prob. > 150mm
Valid: 20191021 - 20191027



Less probability of rainfall to exceed 150 mm in most parts of the country.

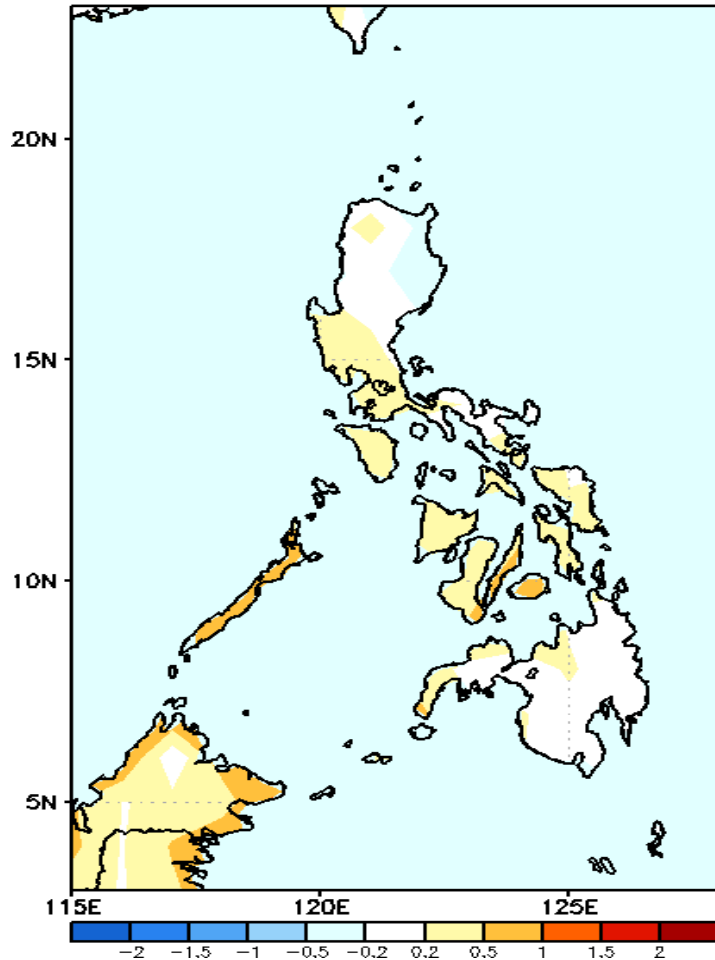
GEFS Week-2 Exceedance Prob. > 200mm
Valid: 20191021 - 20191027



Less probability of rainfall to exceed 200 mm in most parts of the country.

GEFS Week-1 & 2 Forecasts: T2m Anomaly

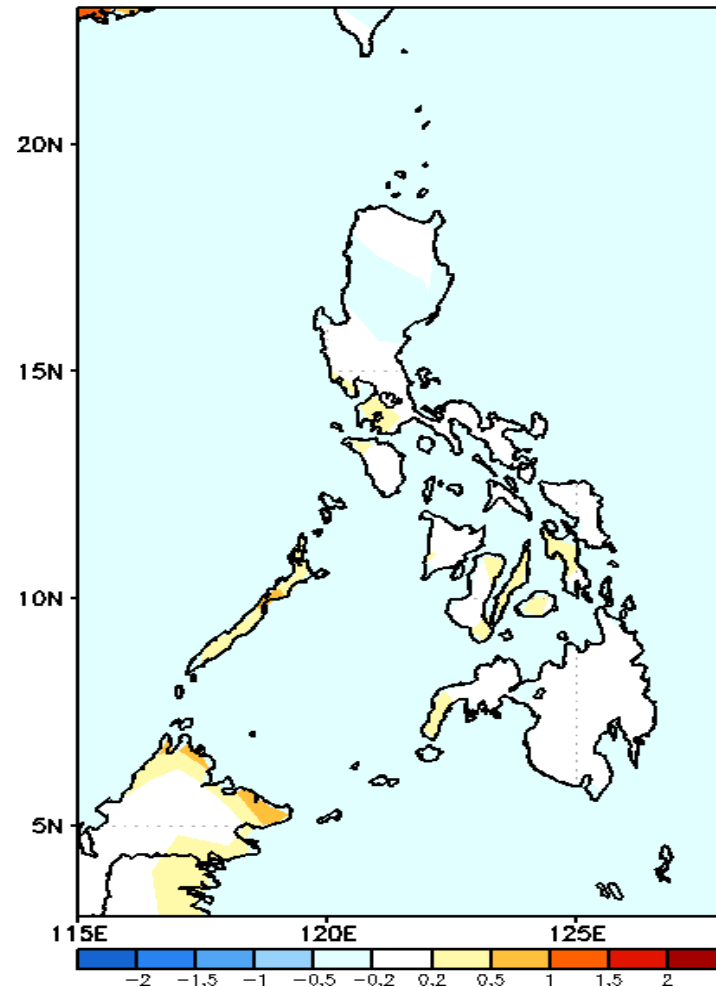
GEFS Week-1 T2m Anomaly
Valid: 20191014 - 20191020



T2m Oct 14-20, 2019

Near average surface air temperature will likely be experienced in most parts of the country while slightly warmer than normal temperature will likely be experienced in Cebu, Bohol and Palawan.

GEFS Week-2 T2m Anomaly
Valid: 20191021 - 20191027



T2m Week 2: Oct 21-27, 2019

Near average surface air temperature will likely be experienced in most parts of the country